

# Nema Super Sprayer

## Instruction manual

Use When Applying 10 - 50 million nematode pack sizes



**The Nema Super Sprayer is a hand sprayer which can be attached to garden hoses, enabling distribution of nematodes onto lawns, hedges or garden plants.**

### Tips for an optimal nematode treatment:

#### Required Conditions For Use

- Spray the nematodes in the evening, or in cloudy or rainy weather. Bright sunlight is damaging for nematodes as they are U.V. sensitive.
- Use the nematodes as soon as possible on receipt. Nematodes can be kept refrigerated between 4°C and 8°C for a few days but it is best to use them when they are fresh.
- Use the nematodes immediately after opening the sachet.
- The mixed solution of nematodes in water cannot be stored.

#### Soil Application

- Apply the nematodes at a soil temperature of 10°C and above. Around 20°C is the ideal temperature for nematode applications.
- After treatment, keep the soil moist for two weeks. This way the nematodes will not dry out and will use the water film to move around in.



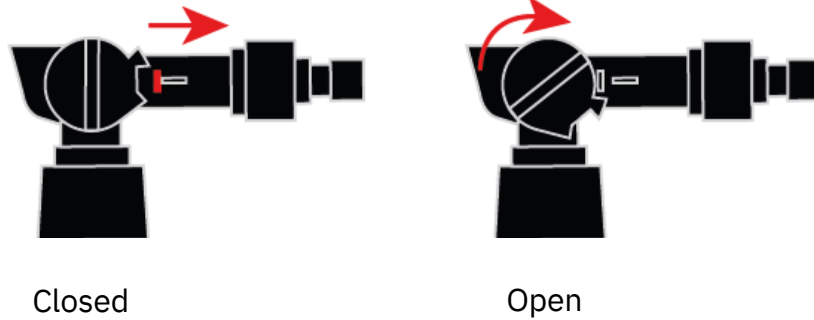
#### Leaf Application

- Apply the nematodes as soon as pest insects are detected.
- It is important to directly spray the nematodes onto the pest insects as nematodes have limited mobility on leaves.
- After treatment, keep the sprayed plant moist for at least two hours. This will help stop the nematodes from drying out.
- The nematodes will then use the water film to move around in.



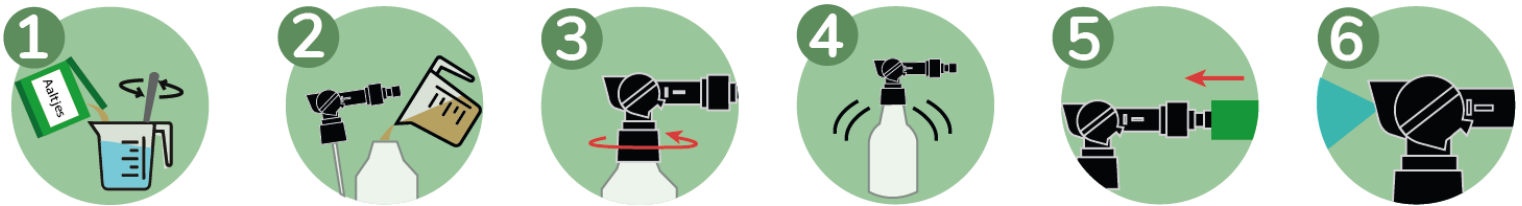
# Opening and closing the sprayer

Bend the plastic tab so that the round sprayer button can be turned 90 degrees. The sprayer is now ready to use.



## Instructions

1. Mix the entire contents of the nematode sachet with 1 litre of lukewarm water and stir until the product is completely dissolved. This will leave you with the nematode concentrate.
2. Use a funnel, or measuring cup, and pour the required amount of concentrate into the Nema Super Sprayer. Top this up with tap water. Correct application amounts are detailed below in Table 1.
3. Attach the sprayer head to the bottle.
4. Shake the Nema Super Sprayer to mix the nematodes in the liquid.
5. Connect a garden hose to the Nema Super Sprayer.
6. Open the water tap and start spraying, moving the sprayer gently back and forth. Start with the most damaged areas and continue spraying all the areas where you suspect the presence of pests.



- After 3 - 5 minutes (depending on the water pressure) all of the nematodes will have been applied to the soil, or plants, and the Nema Super Sprayer will be empty.
- Repeat the application steps as often as indicated in the refill column below.
- Clean all parts of the Nema Super Sprayer thoroughly with water after use.

**Table 1**

Number of nematodes	Max. area to be treated	Concentrate required (ml)	Number of Nema Super Sprayer refills
10 million	20 m <sup>2</sup>	500	1
25 million	35 - 50 m <sup>2</sup>	350	2
50 million	70 - 100m <sup>2</sup>	200	4

*Natural Pest Control with Dragonfli*

[www.dragonfli.co.uk](http://www.dragonfli.co.uk)